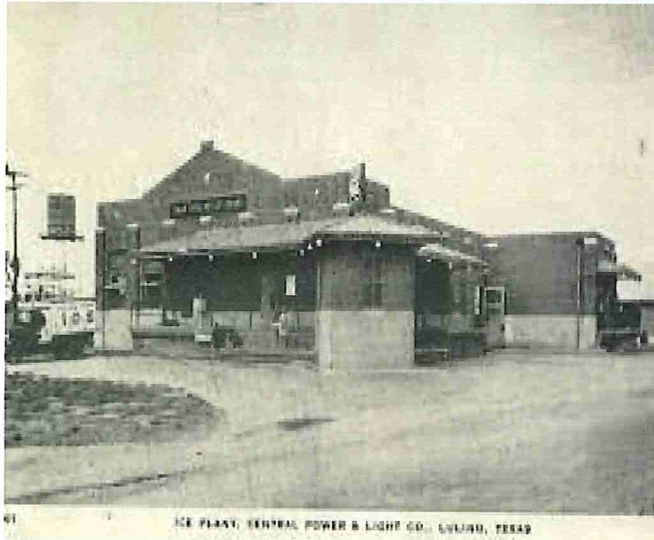


J.B.NICKELLS LIBRARY

OCTOBER 11, 2022

@ 5:00 p.m.

DO YOU REMEMBER  
CALDWELL COUNTY BACK  
WHEN.....



ICE PLANT, CENTRAL POWER & LIGHT CO., LULISIA, TEXAS



THE **SARG** Records ANTHOLOGY  
South Texas 1954-1964

J.B.NICKELLS  
LIBRARY  
OCTOBER 11, 2022  
@ 5:00 P.M.

DO YOU  
REMEMBER  
CALDWELL COUNTY  
BACK WHEN.....